

# SERIES 77 ip



## **INVERTED MOUNT BLOCK & TACKLE BALANCE**

SCREW MOUNT  
OPTION

**MAXIMUM SASH OPENING**  
*ACHIEVE EGRESS UTILIZING SMALLER WINDOWS*

**BALANCE TRAVELS WITH THE SASH**  
*NO NEED TO PAINT OR COVER BALANCE*

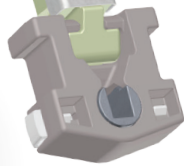
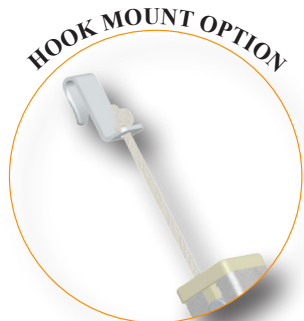
**DURABLE, ONE PIECE DESIGN**  
*PROVIDES MAXIMUM STRENGTH AND SAFETY*

**DESIGNED FOR RESIDENTIAL TILT APPLICATIONS**  
*SASH WEIGHTS UP TO 45 LBS*

**MUSIC WIRE SPRINGS BY CALDWELL**  
*FATIGUE RESISTANT PROVIDING CONSISTENT  
AND RELIABLE PERFORMANCE*

**REAR LACED CORD**  
*PREVENTS INTERFERENCE WITH TILT LATCHES*

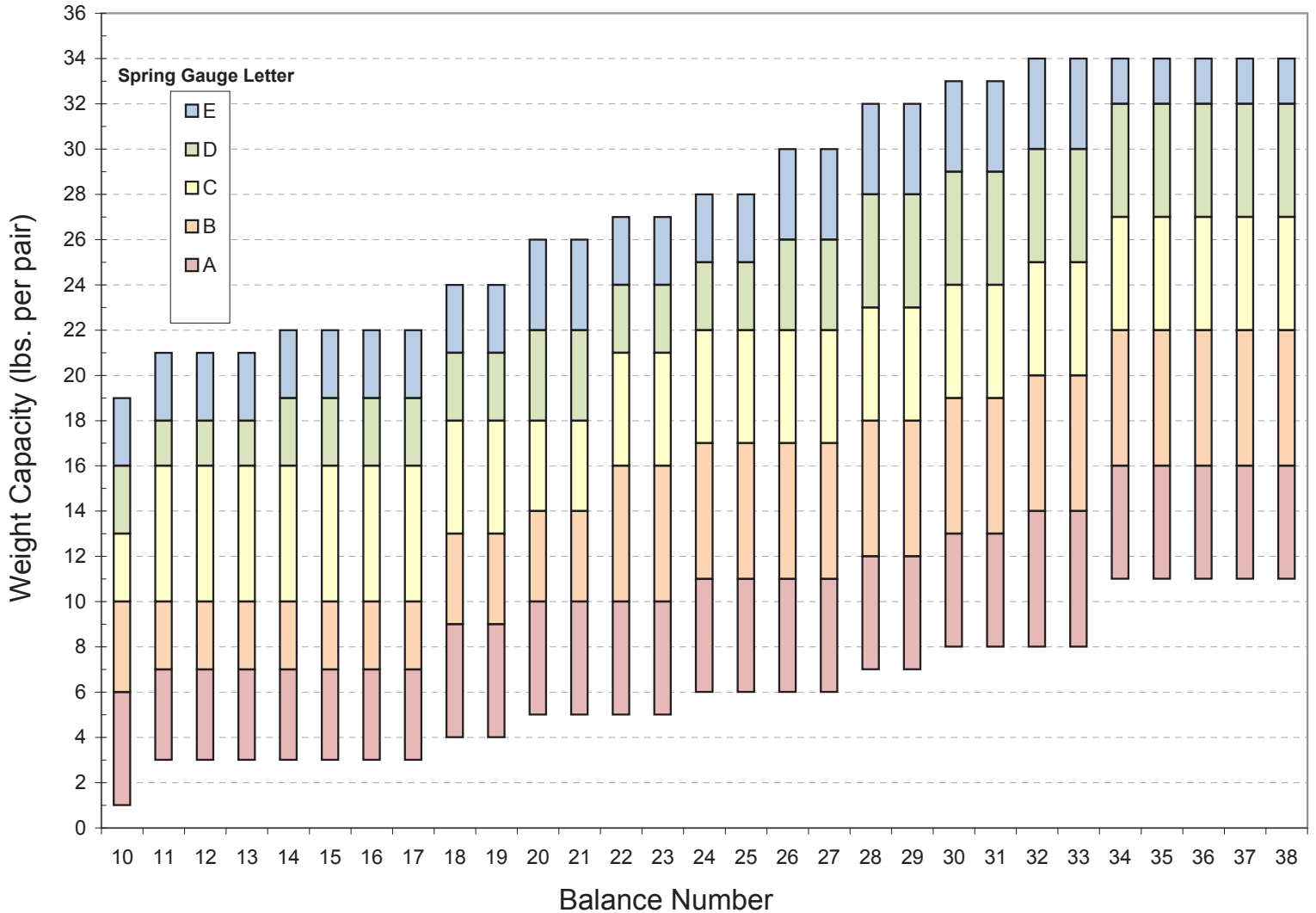
HOOK MOUNT  
OPTION



**LENGTHS: 8 - 46 INCHES**  
**WEIGHT RANGES: 2 - 45 LBS**  
**AAMA 902-07 CLASS 2**  
**VERIFIED COMPONENT**

*Solutions That Set New Standards*

## SERIES 77 ip WEIGHT CAPACITY CHART



### HOW TO ORDER:

*Please use the chart above to help you in choosing the correct part to order:*

1. Find your balance number (ex. 26)
2. Choose the weight capacity needed (ex. 24 lbs)
3. Follow your balance number and weight capacity to the point where they intersect to find your spring gauge letter. (ex. D)
4. Please order using your Balance Number - Spring Gauge Letter. (ex. 26-4)