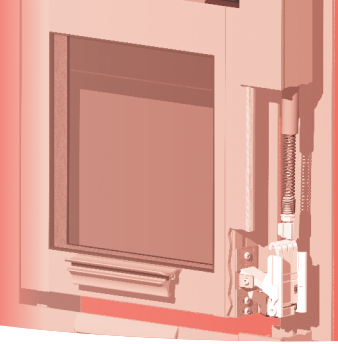
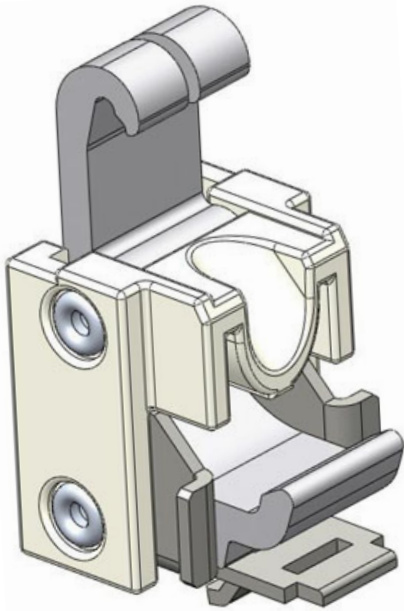


ECO-CARRIERTM



AN ECOLOGICALLY FRIENDLY CARRIER SYSTEM FOR BALANCING HEAVY SASH



A NEW CONCEPT FOR SASH ATTACHMENT TO BALANCES FROM CALDWELL

*INCREASES WINDOW VISION AREA
COMPATIBLE WITH A VARIETY OF BALANCE PLATFORMS*

ADAPTABLE TO DIFFERENT WINDOW MATERIALS AND WINDOW PROFILE CROSS-SECTIONS

ALUMINUM, FIBERGLASS, VINYL AND WOOD

BUILD LARGER AND HEAVIER SASH WITH MINIMAL FABRICATION CHANGES

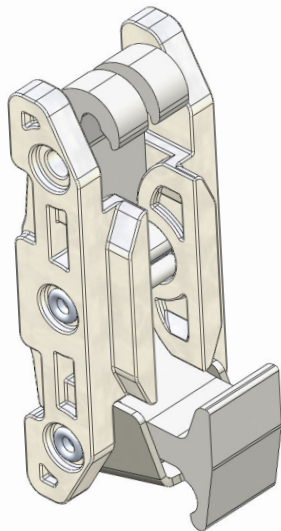
SUPPORTS SASH WEIGHTS UP TO 200 LBS

MINIMIZE SASH OPERATING FORCES

*THE CARRIER SYSTEM ABSORBS BALANCE TORQUE TO
REDUCE FRICTION & SASH OPERATING FORCES
BY UP TO 10 LBS. FOR A 98' TALL WINDOW*

REDUCE CONDUCTIVE FRAME CROSS-SECTION

*REDUCE MATERIAL COSTS
INCREASE THERMAL PERFORMANCE
REDUCE ENERGY COSTS*

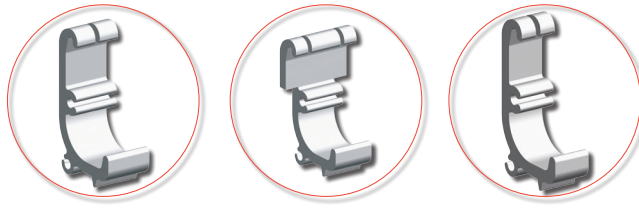


PATENT PENDING

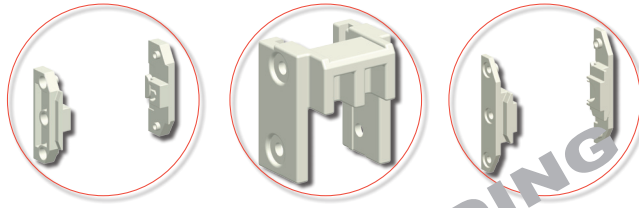
Solutions That Set New Standards

ECO-CARRIER™ PLATFORM

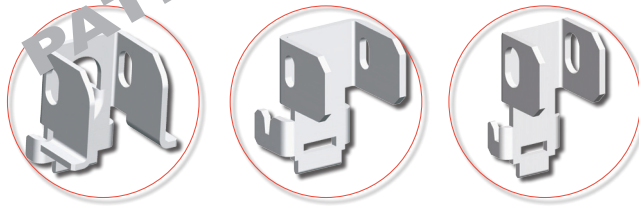
BODY



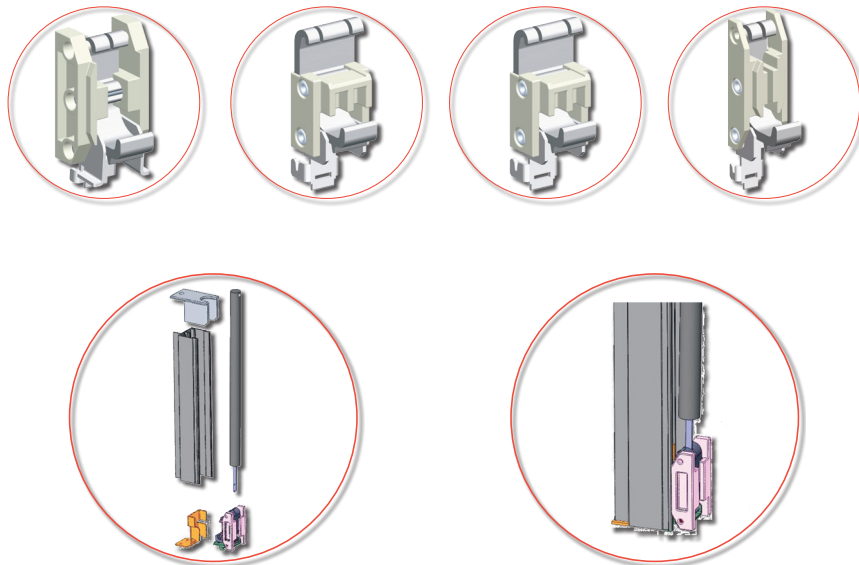
GUIDES



ANCHOR



ASSEMBLY



PATENT PENDING