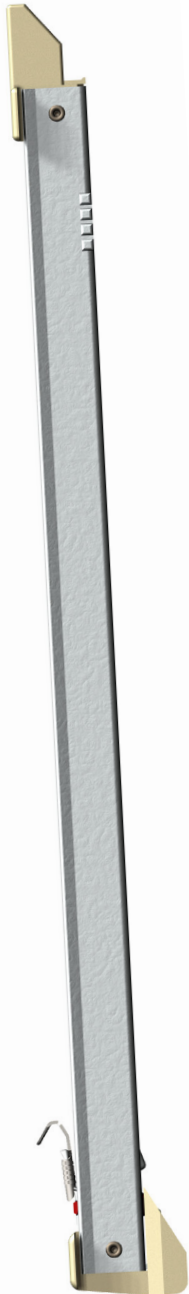


# SERIES 86



## **SIDELOAD BLOCK & TACKLE BALANCE**



**BALANCE RIDES WITH THE SASH**  
*BALANCE HIDDEN FROM VIEW DURING OPERATION*

**DESIGNED FOR EASY INSTALLATION**  
*RELIABLE, LOW COST ASSEMBLY*

**HEMMED EDGES**  
*FOR EASE OF HANDLING DURING INSTALLATION*

**INDEPENDENTLY ROTATING PULLEY WHEELS**  
*REMARKABLY CONSISTENT, SMOOTH OPERATION*

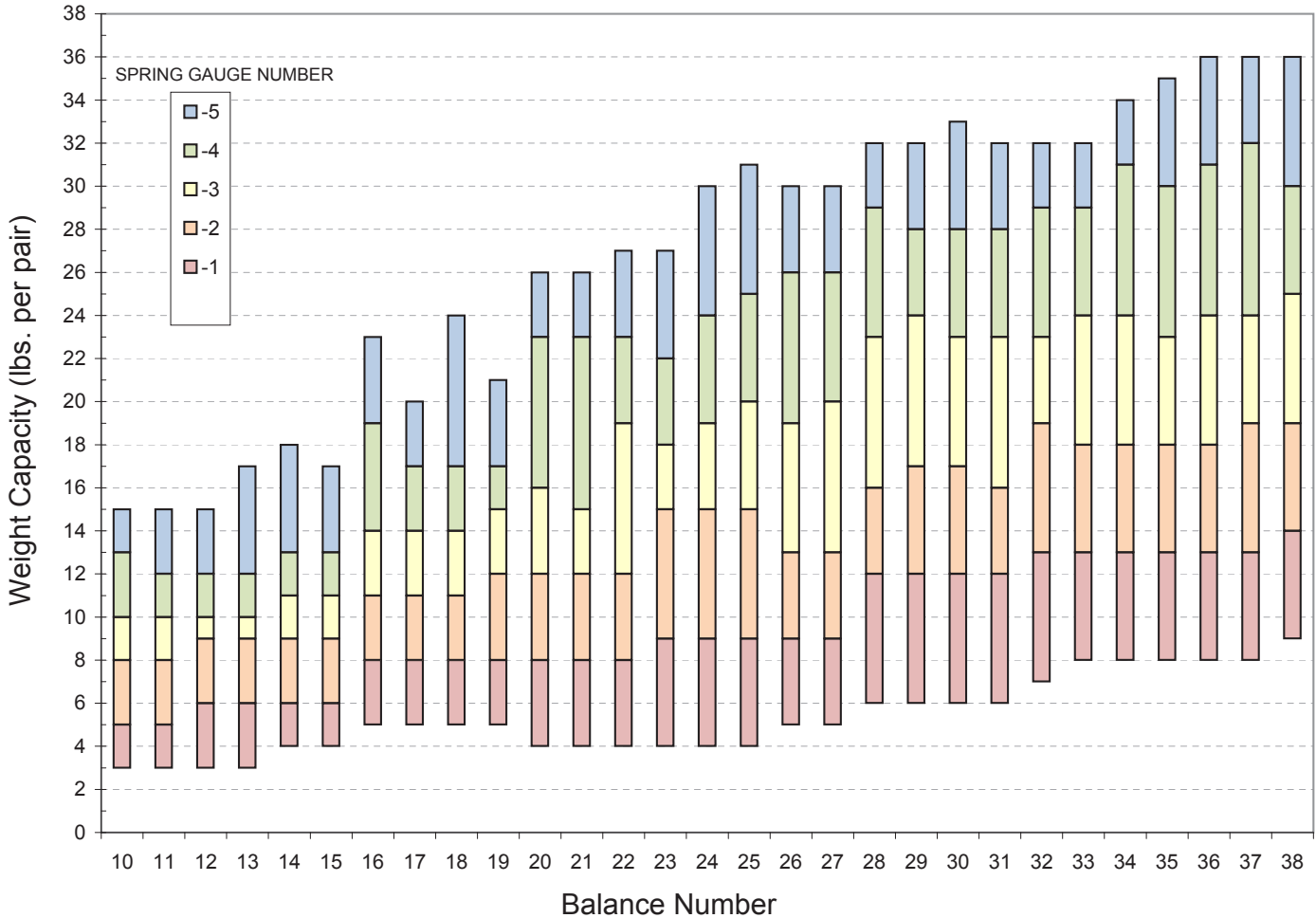
**MUSIC WIRE SPRINGS BY CALDWELL**  
*CONSISTENT, HIGH QUALITY PERFORMANCE*

**STAINLESS STEEL HOOK TERMINAL**  
*CORROSION RESISTANT, REQUIRES ONLY A SINGLE  
JAMB PUNCH*

**LENGTHS: 8 - 54 INCHES**  
**WEIGHT RANGES: 3 - 53 LBS**  
**AAMA CLASS 2**  
**VERIFIED COMPONENT**

*Solutions That Set New Standards*

## SERIES 86 WEIGHT CAPACITY CHART



### HOW TO ORDER:

*Please use the chart above to help you in choosing the correct part to order:*

1. Find your balance number (ex. 26)
2. Choose the weight capacity needed (ex. 24 lbs)
3. Follow your balance number and weight capacity to the point where they intersect to find your spring gauge Number. (ex. 4)
4. Please order using your Balance Number - Spring Gauge Number. (ex. 26-4)